

# TRANSFORMERS

## DARK OF THE MOON™

AGES 5+

36064

AUTOBOT™

EASY

**BUMBLEBEE™**

LEVEL: 1 2 3

NOTE: Some parts are made to detach if excessive force is applied, and are designed to be reattached if separation occurs. Adult supervision may be necessary for younger children.



### CHANGING TO VEHICLE

1 REMOVE JET PACK

2

3

4

5

6

7

**VEHICLE MODE**

Reverse order of instructions to convert back to robot.

### CHANGING TO APC MODE

ASSAULT VEHICLE MODE

MISSILE STORAGE

JET PACK STORAGE

1

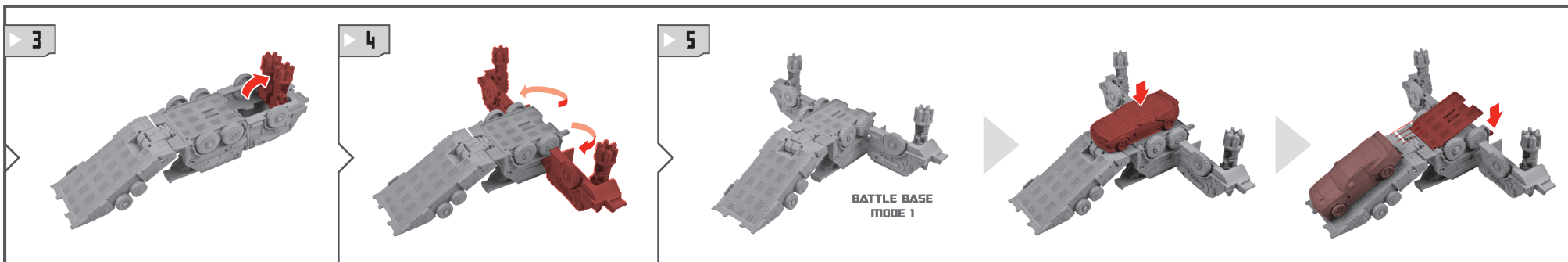
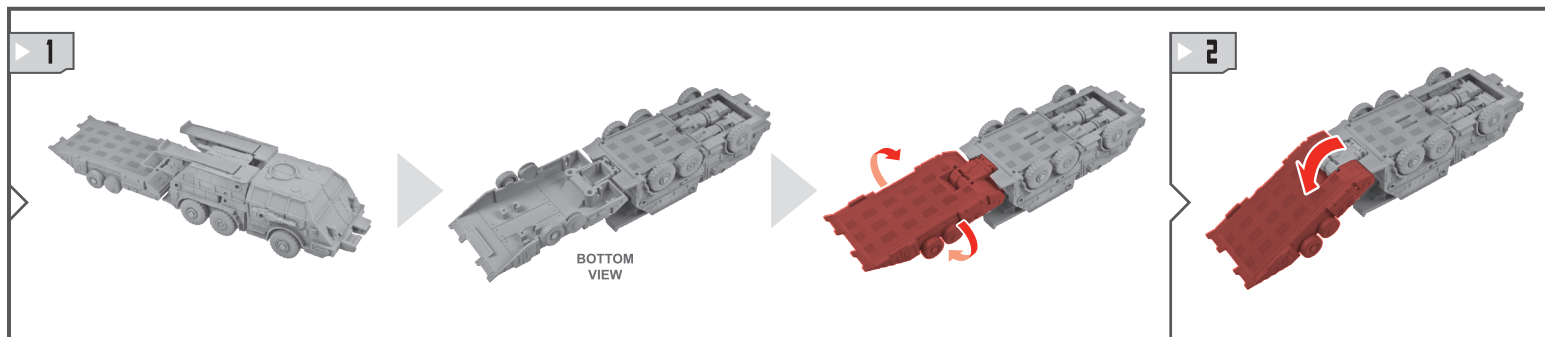
2

3

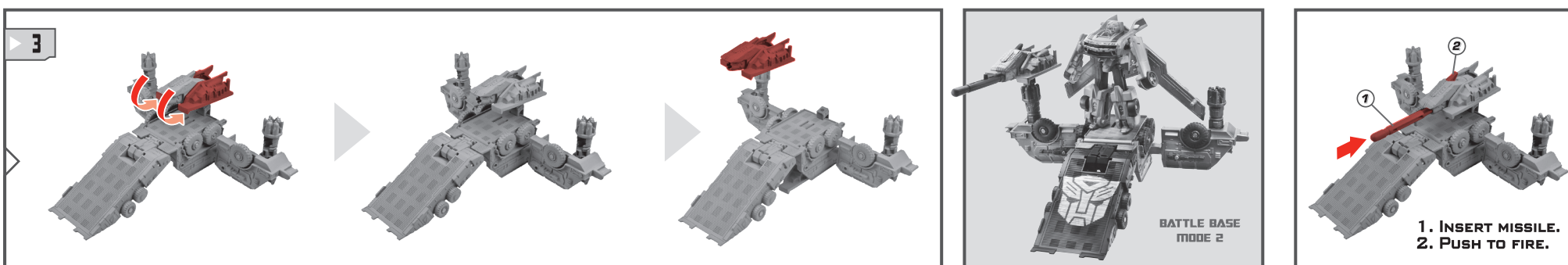
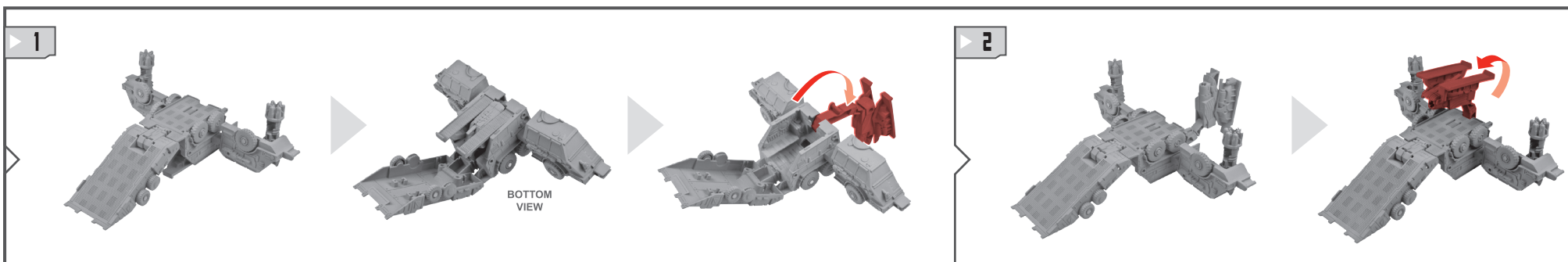
4

**APC MODE**

## CHANGING TO BATTLE BASE MODE 1



## CHANGING TO BATTLE BASE MODE 2



Reverse order of instructions to convert back to assault vehicle.



Product and colors may vary. Some poses may require hand support.  
© 2011 Paramount Pictures Corporation.  
Manufactured under license from TOMY Company, Ltd.  
®\* and/or TM\* & © 2011 Hasbro. All Rights Reserved. TM & ® denote U.S. Trademarks.



[TRANSFORMERS.COM/INSTRUCTIONS](http://TRANSFORMERS.COM/INSTRUCTIONS)

Retain instructions for future reference.



Camaro and all related Emblems and body designs are General Motors Trademarks used under license to Hasbro, Inc.

P/N 7174270000